



Sadara Teknologi
Indonesia

OCTOBER 2024

COMPANY PROFILE

INDUSTRY 4.0 



www.sadarateknologi.com

TABLE OF CONTENT



1.

WHO
WE ARE

2.

VISSION &
MISSION

3.

HEAVY EQUIPMENT
SIMULATOR

4.

INDUSTRIAL
AUTOMATION

5.

INDUSTRIAL
SOFTWARE

6.

PHYSICAL &
CYBER SECURITY

7.

SAFETY
SOLUTION

8.

ENERGY & SUSTAINABLE
SOLUTION

9.

THERMAL
SOLUTION



WHO WE ARE

We are an innovative technology company dedicated to revolutionizing the mining, oil and gas industries. We focus on developing industrial automation solutions and advanced simulators designed to improve the efficiency, safety and productivity of operations.

Sadara Teknologi Indonesia started in January 2023 at Indonesia's leading technology research institute in developing new technologies such as automation industry, Simulator and so on.



**DIGITAL
TRANSFORMATION
FOR YOUR ENERGY
INDUSTRY**

VISSION & MISSION



Vision

- SADARA is the future Technology in the industry. We work together with honeywell company to provide many things that are needed to support industry 4.0. We also provide Heavy Equipment Operation Simulator Training and Corva data-driven insights that empower real-time informed decisions via mobile and web, power supply & Compressed Air and Industrial Lighting to help Customers to easily do work with Technology.

Mission

- Perform business with respectable cost effectiveness and efficiency. We are making the world a better place by helping people.
- Technology Indonesia provider for sustainable.
- To be competent and reliable company in the field of technology for all of our customers throughout Indonesia.

HEAVY EQUIPMENT SIMULATOR

Truck simulators are training tools designed to mimic the actual truck driving experience. Using computer technology, these simulators create a highly realistic environment, allowing drivers to practice various maneuvers and situations that they may face in the field.



3 TYPE SIMULATOR



LITE



PRO



REPLICA

Descriptions	LITE : Simulator LITE type is based on a classroom style of teaching, equipped with off-the-shelf controls (or custom-made controls) presented on a HD single desktop display with our simulator software running on a high-end PC unit and using the latest high-end graphic cards	PRO : Simulator PRO type is complete with a simulator base and complemented with replica controls (optional upgrade to authentic controls available).	REPLICA : Simulator REPLICA type is the closest you can get to a real operating machine. Complete with cutting-edge LED Monitors, High-End Accessories, Authentic Controls, and personal branding.
Degree of Customisation	LOW	MEDIUM	HIGH
Simulator Base	Basic classroom desk	*Simulator Pro Base (Customizable to requirement) (+\$) *n-Degree of Freedom Base (n-DOF automation Base) (+\$\$\$)	Actual Heavy Equipment with heavy modification (Customizable to requirement (+\$))
Simulator Manager Software	Included	Included	Included
Number of Screens	1 (Front View only) 3 (Front View, Left View, Right View) 4 (Front View, Rear View) (Left View, Right View) *Consult with us to determine how many screens your simulator needs	1 (Front View only) 3 (Front View, Left View, Right View) 4 (Front View, Rear View) (Left View, Right View) *Consult with us to determine how many screens your simulator needs	4 (Front View, Rear View) (Left View, Right View)
Personalization (Corporate Branding)	Not Available	Not Available	Not Available
Price Range	\$	\$\$-\$\$\$	\$\$\$-\$\$\$\$
Price Range	All Simulator	All Simulators exc. Tower Crane	All Simulators

Forklift Simulator Mobile Crane	✓	✓	✓
Simulator Hydraulic Excavator Simulator	✓	✓	✓
Bulldozer Simulator	✓	✓	✓
Mining Truck Simulator	✓	✓	✓
Tower Crane Simulator	✓	✗	✓

Heavy Equipment Simulator

INNOVATION OUR DNA

Controls and Autonomy, Digital Transformation and Sustainability



CONTROLS AND AUTONOMY

Higher productivity and efficiency, improved safety and speed for more profitable business



DIGITAL TRANSFORMATION

Connecting assets, people and processes to power business digital transformation



SUSTAINABILITY

Broad offerings that span circularity, energy, environment, health, safety, security and resiliency/accountability

Our Innovation & Decades of Industry Expertise Keeps the World Working

INDUSTRIAL AUTOMATION

(SCADA) Supervisory Control And Data Acquisition.

Honeywell provides a highly scalable, integrated, multiserver SCADA solution that incorporates innovative applications for human machine interface (HMI) to address complex remote automation requirements.



(PLC) Programmable Logic Controller.

Is a modular, scalable rack-based industrial controller delivering powerful performance in a control application.



(IIOT) Industrial Internet of Things Sensors

It leverages the technology and connectivity of the Internet of Things in major verticals like aerospace, manufacturing and oil and gas.



(DCS) Distributed Control Systems

Honeywell transforms process control beyond traditional DCS functionality by unifying people with process variables, business requirements and asset management.

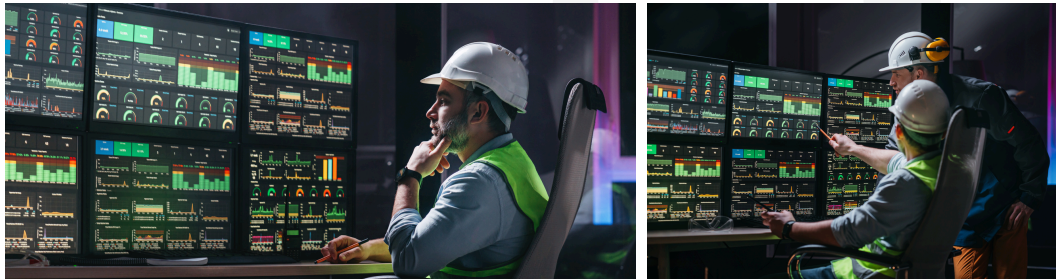


Field Instruments

Honeywell's measurement and control products enable users to manage their plant assets better and optimize their productivity.



(SCADA) Supervisory Control And Data Acquisition.



(IIOT) Industrial Internet of Things Sensors



(PLC) Programmable Logic Controller.



(DCS) Distributed Control Systems



Field Instruments



Honeywell Industrial Automation enables our customers to run safer and more efficient operations. From refineries to distribution centers to retail stores, we help deliver results while improving worker safety and meeting sustainability goals such as reduced carbon emissions – by leveraging connectivity, advanced data analytics, software, robotics, sensors, process automation and asset performance management solutions.

TECHNOLOGIES

- Control solutions, emissions reduction, energy storage and management, metrology, cybersecurity, and asset performance management solutions and services
- Data-driven IoT technologies for the utility industry delivering insight, optimization, and enhanced safety
- Combustion and heating solutions, combustion safety + services
- Automation material handling solutions, including design and emulation, warehouse and labor management software, and services
- Advanced sensors, switches, controls for healthcare, transportation, industrial and supply chain
- Worker productivity solutions including mobile computing, scanning, printing, voice guided work and software
- Personal protective equipment for industrial and healthcare applications
- Process Technologies, equipment, catalysts, and services for fuels and petrochemicals



We Enable our Customers to Enhance the Safety, Sustainability, Resilience and Productivity of their People, Plants, and Assets

INDUSTRIAL AUTOMATION



PROCESS SOLUTIONS

we are pioneers in automation, controls, instrumentation, software, performance solutions, and related services for industrial operations.



SENSING & SAFETY TECHNOLOGIES

In Sensing & Safety Technologies (SST), we are protecting people and assets while increasing productivity through advanced sensing, diagnostics, and hazard detection solutions.



SMART ENERGY & THERMAL SOLUTIONS

In Smart Energy & Thermal Solutions (SETS), we are leveraging people, digitalization and technology to help utilities safely optimize and protect critical resources and to provide safe and sustainable combustion and heating solutions.

INDUSTRIAL AUTOMATION



PRODUCTIVITY SOLUTIONS & SERVICES

In Productivity Solutions & Services (PSS), we are improving worker efficiency across key industries to enable a more productive and accurate world.



INTELLIGRATED

In Intelligrated (IGS), we are spearheading global automation solutions, empowering top retailers to conquer present challenges and secure a competitive advantage for tomorrow.



PERSONAL PROTECTIVE EQUIPMENT

In Personal Protective Equipment (PPE), we are helping save lives by ensuring that workers can do their jobs safely and go home to their loved ones each day.

INDUSTRIAL SOFTWARE

Is a type of software specifically designed for use in various industries and manufacturing processes. This software plays an important role in automating, optimizing, and managing various aspects of a company's operations.



**Advanced
Process
Control**



**Alarm
Management**



**Asset
Performance
Management**



**Digital
Twin**



**Emission
Management**



**Enterprise Data
Management
(Process
Historian).**



**Inspection
Rounds**

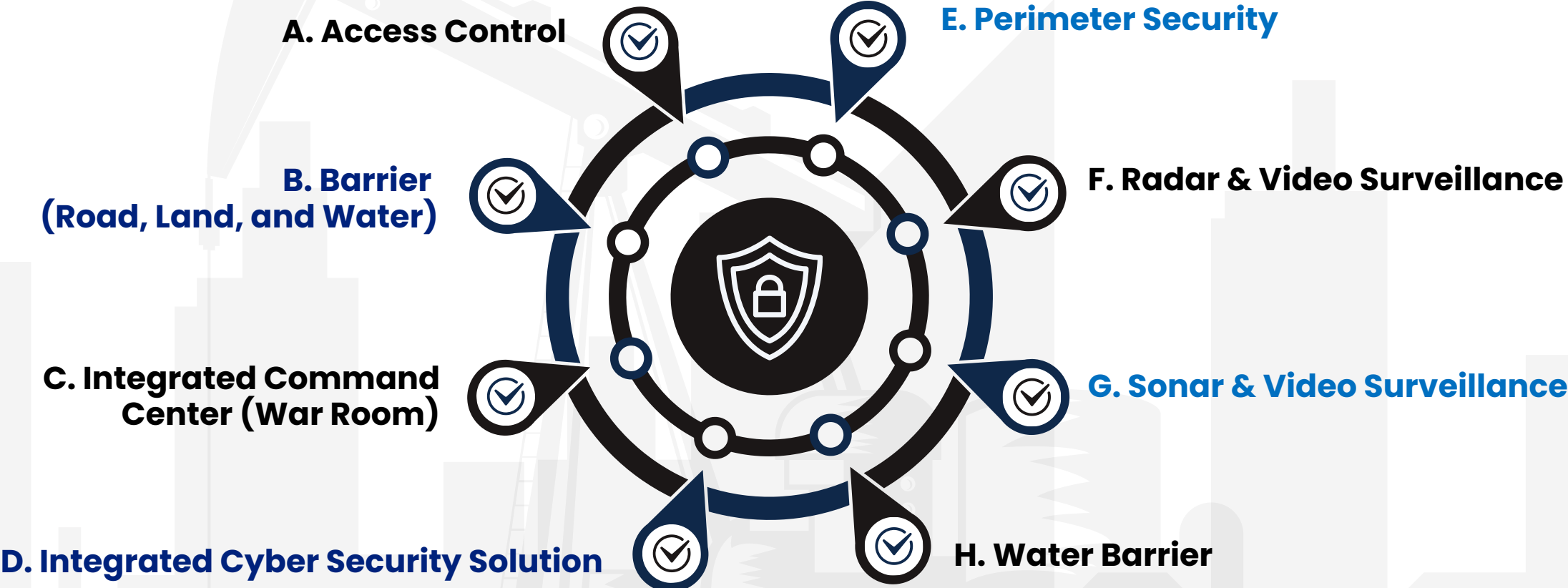


**Production
Management**

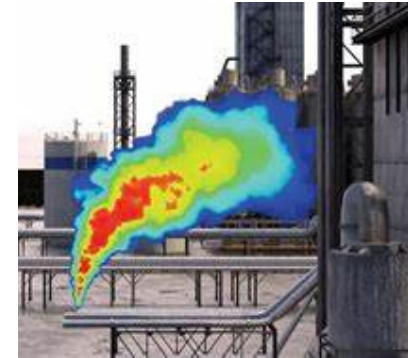


**Operator
Training
Simulator**

PHYSICAL & CYBER SECURITY



SAFETY SOLUTION



Integrated Fire & Gas Control

is a system designed to automatically detect, monitor and respond to fire and gas leak incidents. The system integrates various sensors, actuators, and software to provide a comprehensive solution to protect assets, employees, and the environment from fire and gas hazards.

Integrated Wearable Safety Device

is a compact, high-performance and hands-free cordless device that helps improve efficiency and productivity for scan-intensive tasks.

Gas Cloud Imaging Camera

are able to detect gas leaks long before they reach dangerous concentrations, allowing more time to take corrective action.

ENERGY & SUSTAINABLE SOLUTION

As a global technology leader, Honeywell Energy & Sustainability Solutions (ESS) enables the energy evolution, provides solutions that help reduce emissions, and delivers innovative renewable materials to our customers across industries.

TECHNOLOGIES

- Advanced Fibers and Composites
- Chemicals and Electronic Materials
- Specialty Films and Additives
- Low-Global-Warming Potential Refrigerants, Foam Blowing Agents, Aerosols, and Solvents
- Safety Systems and Instrumentation
- Software Solutions and Industrial Cybersecurity
- Connected Utility Solutions and Services, and Metering Solutions
- Sustainable Aviation Fuel and Other Renewable Fuels
- Renewable Energy Storage and Distribution
- Plastic Waste Circularity

Powering the Future of Energy Transition, Sustainable Materials & Advanced Chemistry, and Petrochemicals

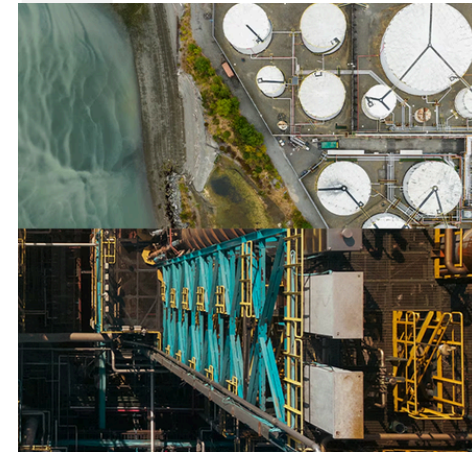


ENERGY & SUSTAINABLE SOLUTION



- **Battery Energy Storage System**

- **Carbon Capture, Storage & Utilization**



● Battery Energy Storage System (BESS)

KEY FEATURES

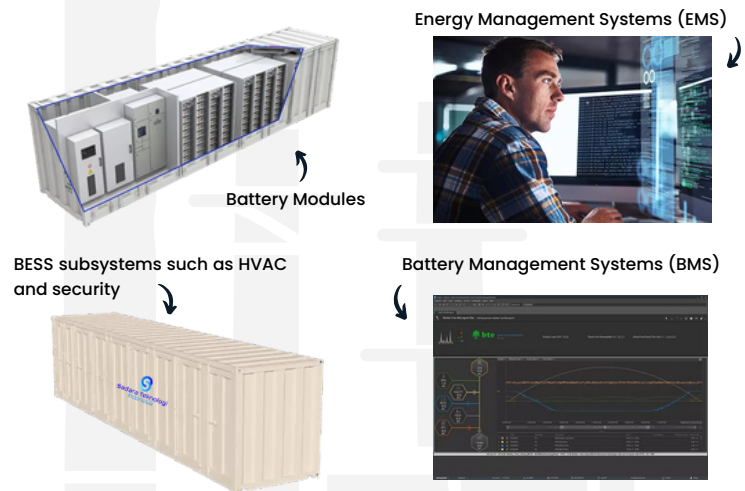
- Proven lithium-ion-based cell chemistry, with energy storage scalable from 500kWh to 4GWh.
- Front of the Meter and Behind the Meter customers alike.
- Maximize renewable energy generation, reduce utility bills and tariffs, increase uptime and reliability.

BENEFITS

- Increased uptime of production or critical infrastructure
- Reduced energy costs
- Reduced carbon footprint
- Maximized ROI on energy assets
- Operate BESS as a spinning reserve in microgrids
- BESS absorbs fluctuations in demand, reducing wear and tear, asset life extended
- EMS extend distributed energy assets and support critical loads
- Increased self-consumption of renewable energy
- BESS as back up power
- Business functions to continue for critical manufacturing process
- Reduced equipment damage that can occur due to outages
- Seamless transfer between grid and BESS



- Provide an easy to customize, scale, manufacture, install, configure, maintain and recycle, Battery Energy Storage System. This includes:

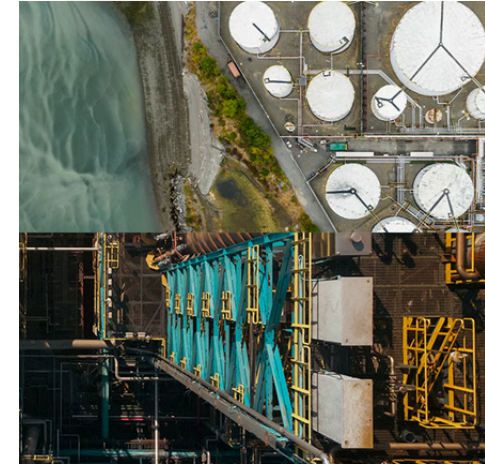


● Carbon Capture, Storage & Utilization

Industrial facilities such as liquefied natural gas (LNG) terminals, hydrogen plants, steel mills, cement plants, power plants, and oil and gas refineries produce large amounts of carbon. Carbon capture technology can help reduce the environmental impact of these and other industries responsible for greenhouse gas emissions.

Carbon capture can reduce CO2 emissions by:

- Decarbonizing industries that can't — at least in the near term — practically eliminating CO2 as a byproduct of their industrial processes, such as cement and steel production.
- Serving as a ready-now stopgap as industries work to decarbonize production processes, helping them achieve their goals around carbon reduction.
- Providing a lower-cost solution in industries and areas where carbon capture, utilization and storage is more economically efficient than other methods of reducing emissions, or where captured carbon could be a useful input to a product.
- Additionally, our Advanced Solvent Carbon Capture technology, which is specifically designed for post-combustion flue gas applications, enables greater than 95 percent CO2 capture.



THERMAL SOLUTION



Burner & Heat Exchanger

Industrial facilities such as liquefied natural gas (LNG) terminals, hydrogen plants, steel mills, cement plants, power plants, and oil and gas refineries produce large amounts of carbon. Carbon capture technology can help reduce the environmental impact of these and other industries responsible for greenhouse gas emissions.



Burner Management System

Burner management is the safe sequencing of burner fuel delivery, flame safety, fuel air ratio and limit operation



Complete Combustion Solutions

The future of manufacturing is connectivity. When your burners can analyze and stream data in real time, you have the ability to increase efficiency and productivity

DIGITAL TRANSFORMATION FOR YOUR ENERGY INDUSTRY



Phone +021-2951-3682
Whatsapp +62 811-4317-019



Website
www.sadarateknologi.com



Email
info@sadarateknologi.com



Location
QP Office, Perkantoran Tanjung Mas Raya
Blok B.1 Nomor 44 South Jakarta,
Indonesia, 12530.